

## Changes to Enrolment Intake Areas

20 July 2020

Dear staff, parents, carers and community members

In Term 1 2020, a review of New Lambton Public School's intake area commenced and was conducted by School Infrastructure NSW, five local principals and Director, Educational Leadership. Extensive information was gathered and considered to address the increasing enrolment demand at New Lambton Public School over recent years and the projection that such demand will continue.

During Semester 1, 2020 five scenarios for change were developed and considered. One scenario was identified for community engagement and consultation from 1 July 2020 to 16 July 2020. This scenario showed the greatest potential for achieving the necessary outcome ie reduce the enrolment demand and number of classes at New Lambton Public School from 27 to 24 over coming years. The final review meeting took place on 17 July 2020.

We wish to thank members of each school community (staff, parents, community members, future parents) who provided comments on proposed changes and acknowledge the distress this has caused many families. As a result of comments submitted, an additional 4 scenarios were developed and carefully considered. However, it was determined these did not have the capacity to achieve the outcome needed without creating additional implications that were more problematic for families and the Department.

As a result of the review and community engagement processes, a recommendation was made to the Department for changes to the New Lambton Public School's intake area. This was approved and these changes are effective from 20 July 2020. These changes were those shared with the community for comment.

On page 2, you will find a map of the updated intake areas for New Lambton Public School, New Lambton Heights Infants School, Wallsend South Public School and Lambton Public School. These changes are currently being uploaded to the NSW Public School Finder webpage at <https://my.education.nsw.gov.au/school-finder>. The intake area for Lambton High School has not been subject to any change.

Now this matter has been resolved, in assessing an enrolment application principals are required to act in accordance with these changes, consider the school's enrolment capacity and classes with available places. Please note, there is an ongoing need for the intake areas of all local schools to be closely monitored over the next 5 years and as a result may be subject to further change.

These changes may result in a family previously local to New Lambton Public School now residing outside the new intake area. If such families remain at their current address, and while their child/children remain enrolled and in attendance at New Lambton Public School, they retain the entitlement to enrol future siblings. This does not apply to families who when the intake area was changed, had a residential address outside the previous intake area for New Lambton Public School or who, since the initial local enrolment of a child moved to a residence outside the intake area. These siblings are deemed non local.

All principals closely considered this important change to address the unsustainable demand on New Lambton Public School and look forward to working together into the future. Any enquiries regarding changes or a sibling enrolment can be made with the relevant school principal. Please contact a school office to seek further clarification or arrange an appointment, should you feel this is required.

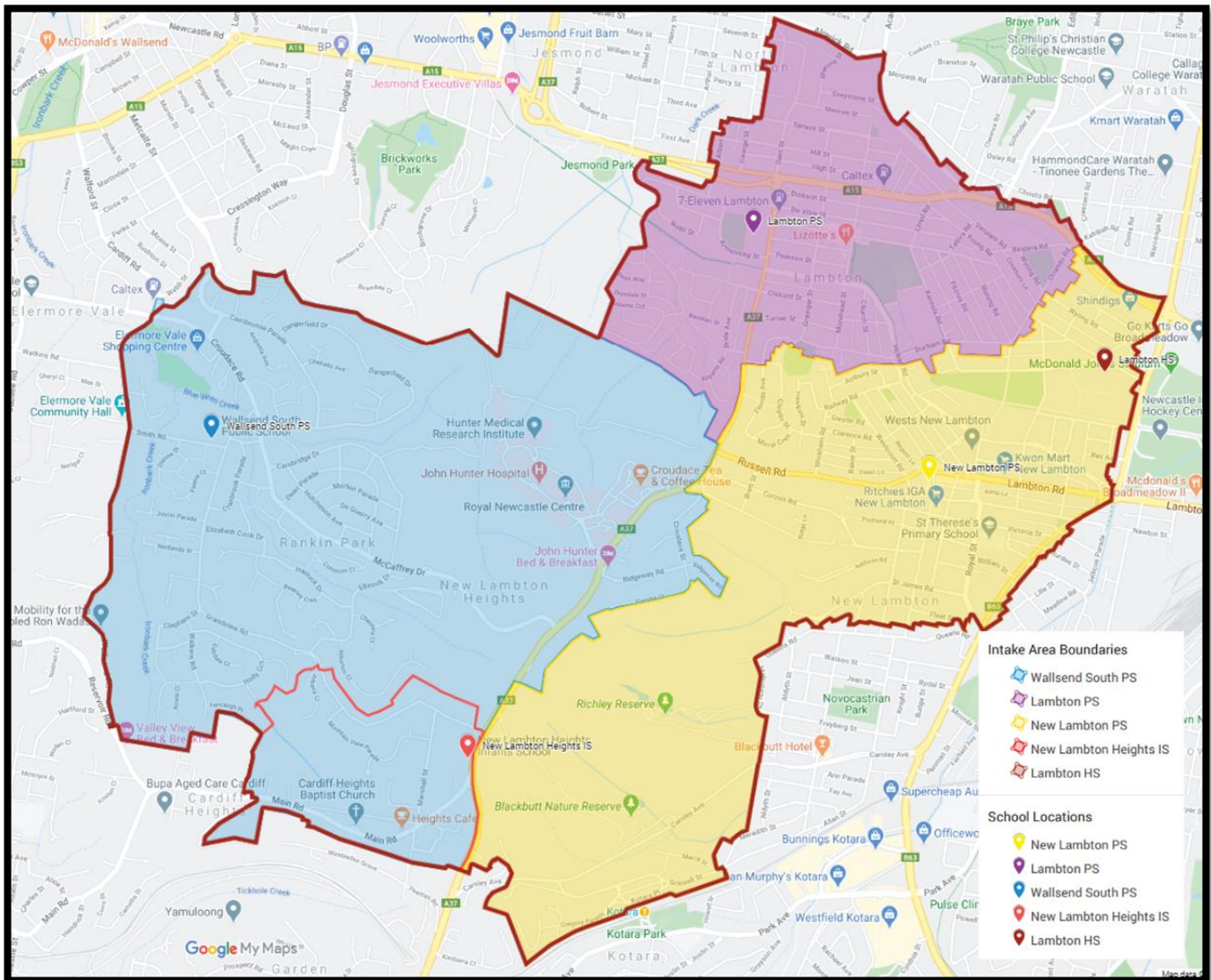
Regards

Mark Warren  
Relieving Principal  
New Lambton Public School

Lisa Hughes  
Principal  
New Lambton Heights Infants School

Kelly Deakin  
Principal  
Wallsend South Public School

## Intake Areas – Effective from 20 July 2020



<p><b>Lambton Public School</b>                  20 Croudance Street                  Lambton NSW 2299                  P: 4957 1667                  E: <a href="mailto:lambton-p.school@det.nsw.edu.au">lambton-p.school@det.nsw.edu.au</a>                  W: <a href="https://lambton-p.schools.nsw.gov.au/">https://lambton-p.schools.nsw.gov.au/</a></p>	<p><b>New Lambton Public School</b>                  Regent Street                  New Lambton NSW 2305                  P: 4957 1511                  E: <a href="mailto:newlambton-p.school@det.nsw.edu.au">newlambton-p.school@det.nsw.edu.au</a>                  W: <a href="https://newlambtonsthp.com.au/">https://newlambtonsthp.com.au/</a></p>
<p><b>New Lambton Heights Public School</b>                  176 Lookout Road                  New Lambton Heights NSW 2305                  P: 4957 2744                  E: <a href="mailto:newlambhti-p.school@det.nsw.edu.au">newlambhti-p.school@det.nsw.edu.au</a>                  W: <a href="https://newlambhti-p.schools.nsw.gov.au/">https://newlambhti-p.schools.nsw.gov.au/</a></p>	<p><b>Wallsend South Public School</b>                  16 Smith Road                  Elermore Vale NSW 2287                  P: 4955 9963                  E: <a href="mailto:wallsends-p.school@det.nsw.edu.au">wallsends-p.school@det.nsw.edu.au</a>                  W: <a href="https://wallsends-p.schools.nsw.gov.au/">https://wallsends-p.schools.nsw.gov.au/</a></p>