

New Lambton Heights Infants School Community Engagement

New Lambton Public School Proposed Intake Area Boundary Changes

Last Wednesday, a Community Engagement Meeting was held to raise awareness of the impact of increasing demand of enrolment at New Lambton Public School and as a result the need to propose changes to our school's intake area.

The principals, Director, Educational Leadership and School Infrastructure NSW met on Friday 3 July 2020 in the afternoon to review and discuss comments submitted from staff, parents, community members and future parents.

This group agreed to provide the proposed changes map and to re-open the survey (Google doc) to allow additional time for comment. The survey will now close on Thursday 16 July, 2020. The survey can be found by clicking on the link:

https://docs.google.com/forms/d/e/1FAIpQLSckcBeenzSqWoAZEIhmFhiAqDGkn5qriVIMbIXgemmBqt6iJg/viewform?usp=sf_link

Our leadership group will then meet again, to consider and discuss all additional comments before making a recommendation to the Department of Education.

In Week 1 Term 3, 2020, principals will be in a position to inform their school community where the process is up to.

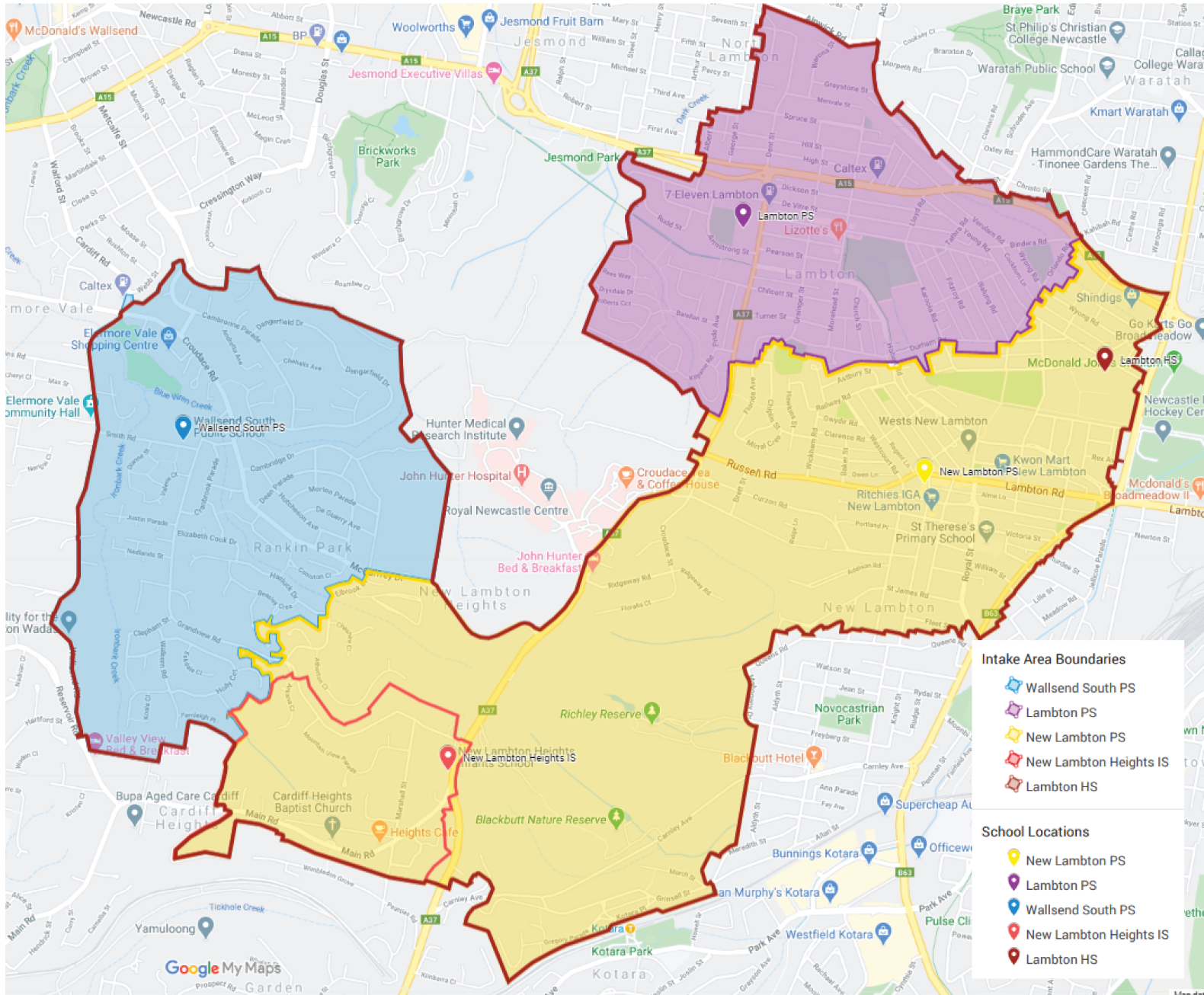
Please feel free to look over the maps that follow this and make a comment by going to the survey (link above).

Kind regards

Lisa Hughes

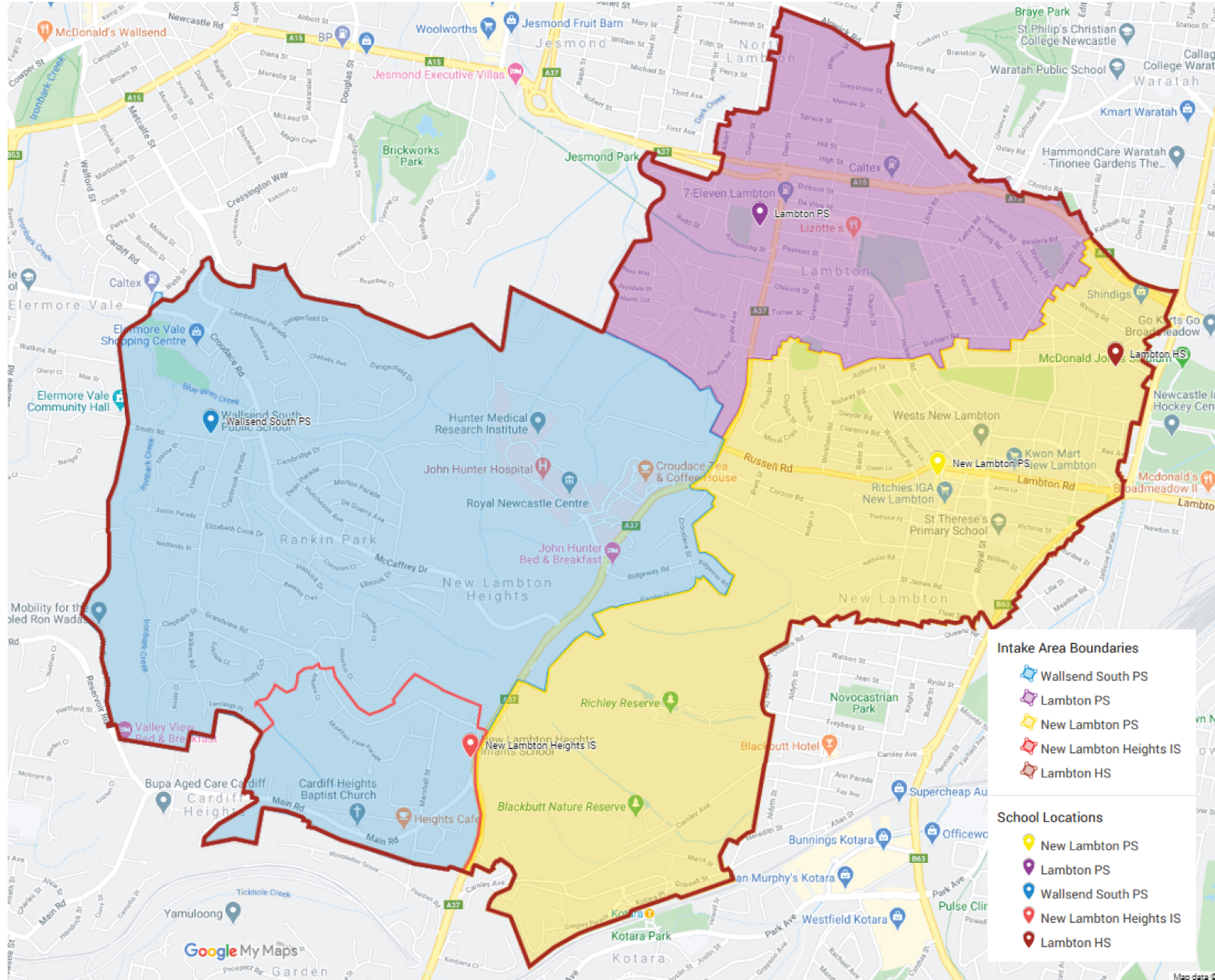
Principal 7/7/20

1. Current Intake Area Boundaries

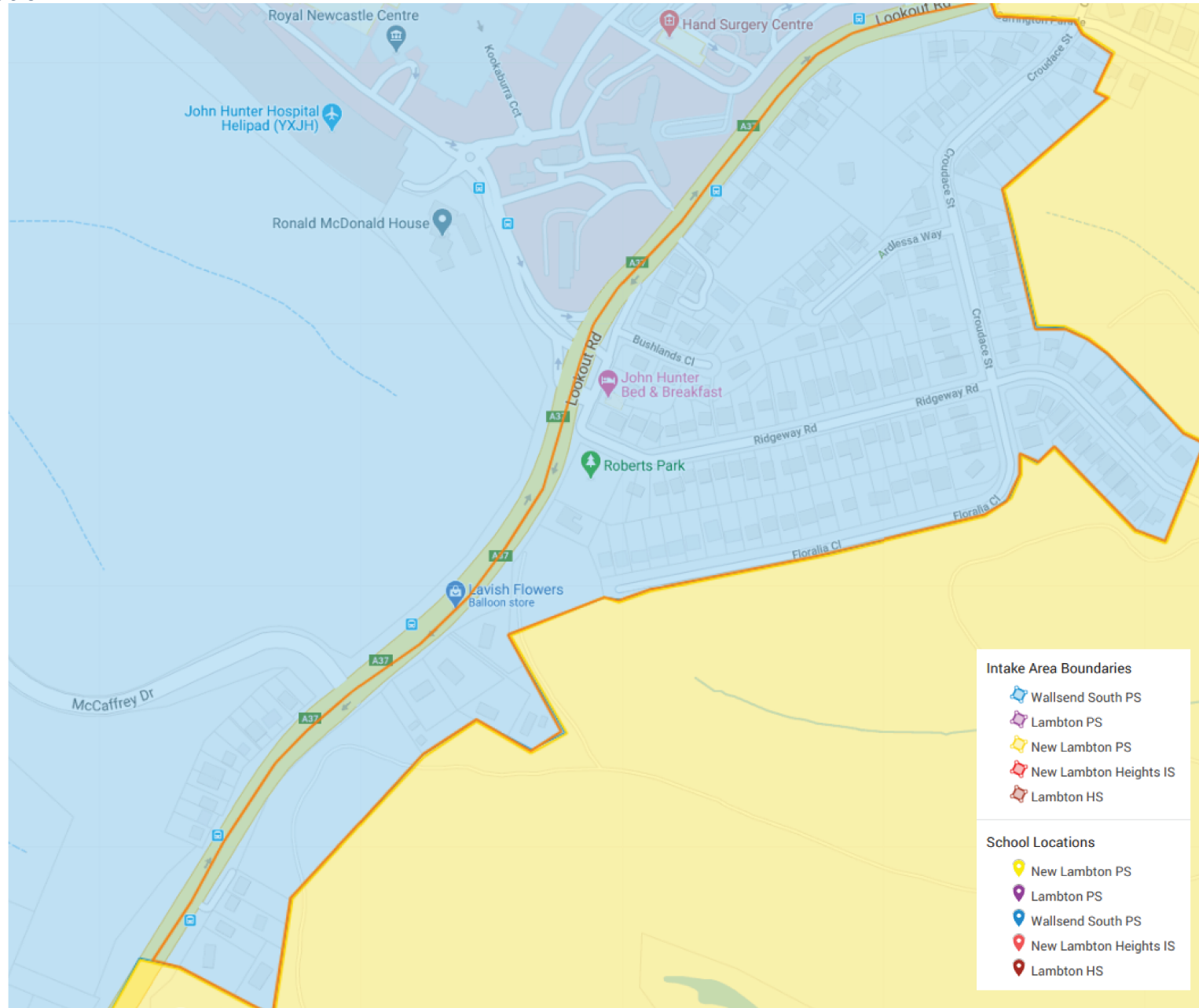


■ NSW Department of Education

2. Proposed Intake Area Boundaries



3. Proposed Intake Area Boundaries – Ridgeway Rd & Croudace St Area



4. Proposed Intake Area Boundaries – 142 Croudace St Designated to Lambton PS

